

# AJ-718

V1.010P

## Auto Resetting Heat Detector with Wireless Interconnect

### Specifications

Detection Type	Electronic Thermistor Sensing
Fixed Temp. Trigger	57°C
Operating Temp. Range	0°C to 49°C
Humidity	0 to 95% RH, no condensation or icing
Power Source	Battery up to 10 year life
Buzzer Output	85db @ 3 meters
Wireless Frequency	433MHz
Interconnect Range	up to 50 meters apart
Dimensions	45mm x Ø116mm
Compatible with	AJ-765 Smoke Detector AJ-R106 Remote Test & Hush Controller

### Operation & Testing

Routine Testing of heat detectors should be done once a month.

To test the AJ-718 heat detectors press the test button for less than 1 second. The sounder should activate.

Any other linked detectors should also activate within 20 seconds.

The detectors sounder will automatically reset, when all the smoke has cleared.

**Hush feature.** When the heat detector has been activated, pressing the test button for less than 1 second will silence that smoke detectors sounder.

### Indication:

Green Flash every 60 seconds, Detector is performing correctly

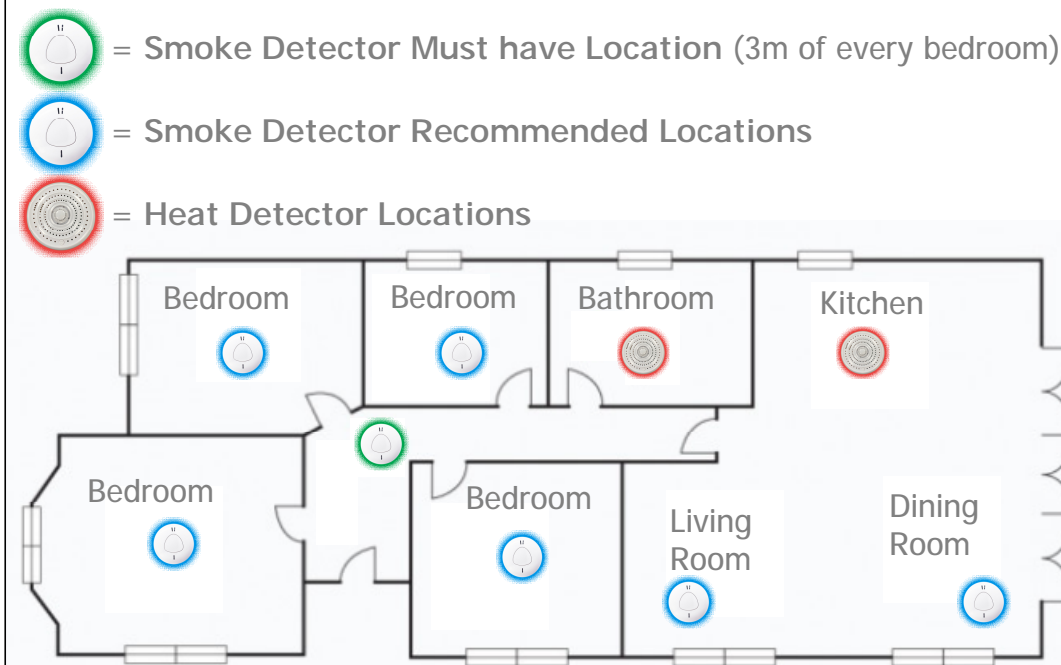
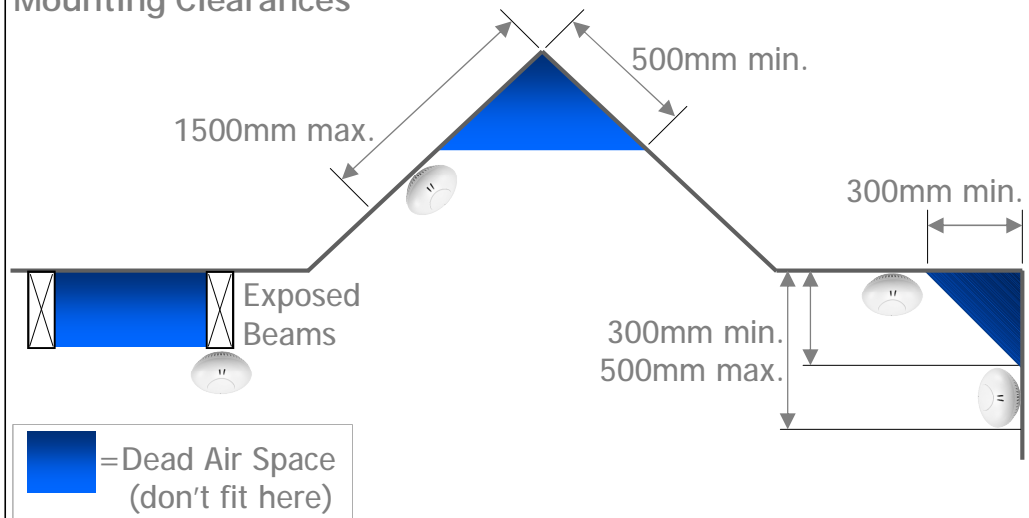
Red Flash every 8 seconds plus beep, Faulty, Clean/Replacement required

Red Flash every 50 seconds plus beep, Battery Low, Replacement required

Red Flashing with No beeping, in Hush mode for 9 minutes

**\*\*Routine cleaning is required to ensure no false triggers.**

### Mounting Clearances



\*Always refer to latest standards/building code for mounting locations

## Pairing AJ-718 Heat Detectors with Wireless Interconnect

### Step 1.

#### Power On

Remove the back and plug the battery lead into the matching socket.

*Note. AJ-718 heat detectors can also be paired with AJ-765 smoke detectors and AJ-R106 remote.*

### Step 2.

#### Clear Memory

Press & hold the test button until the Green light has flashed 4 times.

The Green light will then flash back 3 times slowly.

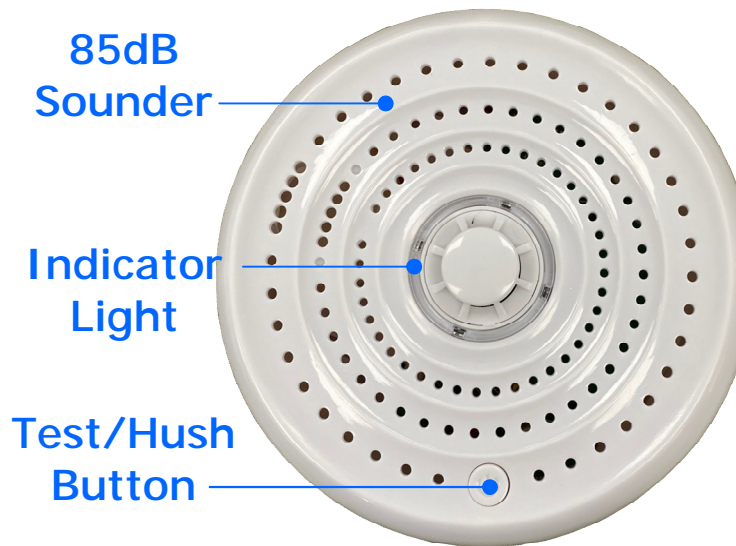
This must be done on all detectors before Pairing.

### Step 3.

#### Select a Master

Press & hold the test button of the detector to be the master, until the Green light has flashed 3 times.

The Red light will then start flashing to indicate its in Pairing mode. (60 seconds maximum)



### Step 4.

#### Learn in a detector

Press & hold the test button of a slave detector, until the Green light has flashed 2 times.

The Red light will then start flashing as it tries to learn

The Green light will flash 3 times to indicate it has paired.

Repeat Step 4, on all other detectors until they have been paired.

### Step 5.

Wait 60 second before testing

### Step 6.

#### Testing

Press the test button (for less than 1 second) on one of the detectors.

Within 20 seconds all detectors paired together should also activate.

Note. The hush button can be pressed on each detector, without affecting the wireless interlink test.

ARROWHEAD ALARM PRODUCTS Ltd.  
1A Emirali Road,  
Silverdale 0932.  
Ph. 09 414 0085  
[www.aap.co.nz](http://www.aap.co.nz)  
v1.01



**Arrowhead**  
Alarm Products